

TECS (Continued)

Hinks, D. (David_Hinks@ncsu.edu)

Shamey, R. (Renzo_Shamey@ncsu.edu)

Tonelli, A. (alan_tonelli@ncsu.edu)

Zhang, X. (xiangwu_zhang@ncsu.edu)

Industrial Design Faculty

Vehicle Design and Integration

Hooper, P. (percy_hooper@ncsu.edu)

Jin, B. (bongil_jin@ncsu.edu)

Laffitte, B. (bryan_laffitte@ncsu.edu)

BME Faculty

Vehicle Design and Integration

Nagle, H. T. (nagle@ncsu.edu)

Advanced Automotive Materials and Manufacturing

Narayan, R. J. (roger_narayan@msn.com)

CBE Faculty

Advanced Automotive Materials and Manufacturing

Spontak, R. J. (rich_spontak@ncsu.edu)

Vehicle Design and Integration (chBE)

Overcash, M. (mrovercash@earthlink.net)

Laboratory for Ionic Liquids & Electrolytes for Energy Technologies

Henderson, W. (whender@ncsu.edu)

NE Faculty

Advanced Automotive Materials and Manufacturing

Murty, K. L. (murty@ncsu.edu)

NC State University

Raleigh, NC 27695
Campus Operator: 919.515.2011

(Faculty bios and profiles found on the following college websites)

<http://www.bme.ncsu.edu/>

<http://www.che.ncsu.edu/>

<http://www.ce.ncsu.edu/>

<http://www.csc.ncsu.edu/>

<http://www.ece.ncsu.edu/>

<http://www.engr.ncsu.edu/>

<http://www.mae.ncsu.edu/>

<http://www.mse.ncsu.edu/>

<http://ncsudesign.org/content/>

<http://www.ne.ncsu.edu/>

<http://www.tx.ncsu.edu/>

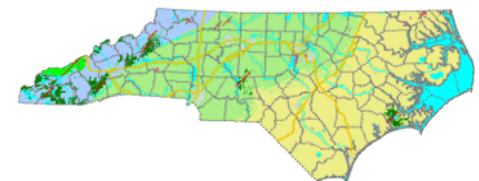
<http://www.tx.ncsu.edu/intrsection/>



NC State Researchers



Automotive Industry



Researchers

MAE Faculty

Buckner, G. D. (greg_buckner@ncsu.edu)
Echekki, T. (techekk@eos.ncsu.edu)
Edwards, J.R. Jr. (jredward@eos.ncsu.edu)
Eischen, J.W. (eischen@eos.ncsu.edu)
Gopalathnam, A. (agopalar@eos.ncsu.edu)
Gould, R.D. (gould@eos.ncsu.edu)
Klang, E.C. (klang@eos.ncsu.edu)
Lyons, K.M. (lyons@eos.ncsu.edu)
Mazzoleni, A. (a_mazzoleni@ncsu.edu)
Ngaile, G. (gngaile@unity.ncsu.edu)
Rabiei, A. (arabiei@eos.ncsu.edu)
Ramasubramanian, M.K. (rammk@eos.ncsu.edu)
Ro, P.R. (ro@eos.ncsu.edu)
Roberts, W.L. (wrobert@eos.ncsu.edu)
Seelecke, S. (stefan_seelecke@ncsu.edu)
Silverberg, L. M. (lmsilver@eos.ncsu.edu)
Tu, J. (jftu@unity.ncsu.edu)
Wu, F. (fwu@eos.ncsu.edu)
Yuan, F. G. (yuan@ncsu.edu)

ECE Faculty

Intelligent Vehicle and Infrastructure Design

Barlage, D. (dwbarlag@eos.ncsu.edu)

Choi, H. (hyeokho_choi@ncsu.edu)
Chow, M. (chow@ncsu.edu)
Dai, H. (Huaiyu_Dai@ncsu.edu)
Dean, A. (alex_dean@ncsu.edu)
Edmonson, W. (wwedmons@ncsu.edu)
Franzon, P. (paulf@ncsu.edu)
Gard, K. (kevin_gard@ncsu.edu)
Grant, E. (egrant@ncsu.edu)
Kolbas, R. (kolbas@eos.ncsu.edu)
Krim, H. (ahk@eos.ncsu.edu)
Liu, X. (xunliu@ncsu.edu)
Muth, J. (muth@unity.ncsu.edu)
Osburn, C. (osburn@eos.ncsu.edu)
Sichitiu, M. (mhsichit@ncsu.edu)
Snyder, W. (wes@eos.ncsu.edu)
Trussell, J. (hjt@ncsu.edu)
Advanced Powertrains and Vehicle Performance
Baliga, J. (bjbaliga@unity.ncsu.edu)
Huang, A. (aqhuang@ncsu.edu)
Muth, J. (muth@unity.ncsu.edu)
Vehicle Design and Integration
Chow, M. (chow@ncsu.edu)

CSC Faculty

Intelligent Vehicle and Infrastructure Design

Fornaro, R. J., (fornaro@ncsu.edu)
Perros, H. (hp@csc.ncsu.edu)
Rouskas, G. N. (rouskas@csc.ncsu.edu)
Young, R. M. (young@csc.ncsu.edu)
St. Amant, R. (stamant@csc.ncsu.edu)
Xie, T. (xie@csc.ncsu.edu)

CCEE Faculty

Intelligent Vehicle and Infrastructure Design

Rouphail, N.M. (rouphail@eos.ncsu.edu)
Advanced Powertrains and Vehicle Performance
Frey, H. C. (frey@eos.ncsu.edu)

TATM Faculty

Advanced Automotive Materials and Manufacturing

Banks-Lee, P. (pbanks-l@tx.ncsu.edu)
Oxenham, W. (William_oxenham@ncsu.edu)
Pourdeyhimi, B. (bpourdeyhimi@ncsu.edu)
Powell, N. (Nancy_Powell@ncsu.edu)
Seyam, A. (aseyam@tx.ncsu.edu)

TECS Faculty

Advanced Automotive Materials and Manufacturing

Freeman, H. (hfreeman@tx.ncsu.edu)
Gorga, R. (regorga@ncsu.edu)
Hauser, P. (peter_hauser@ncsu.edu)